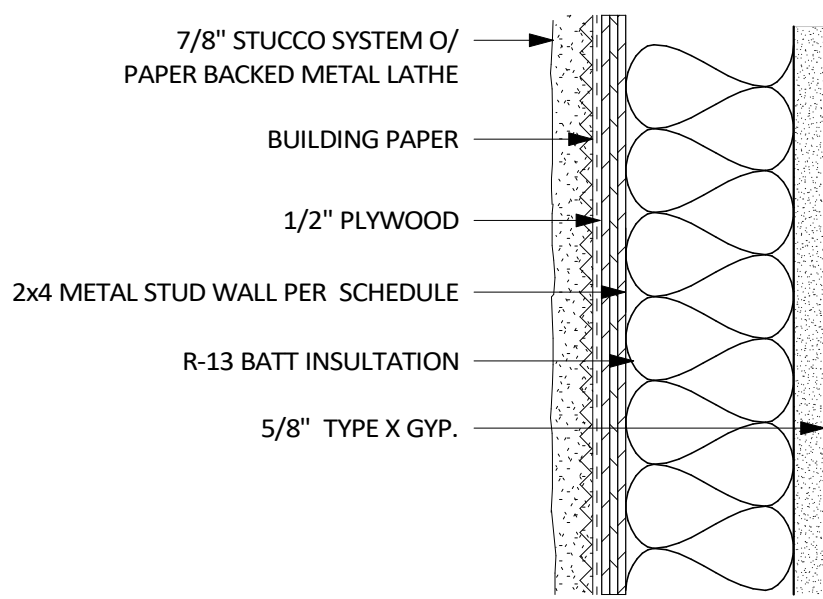
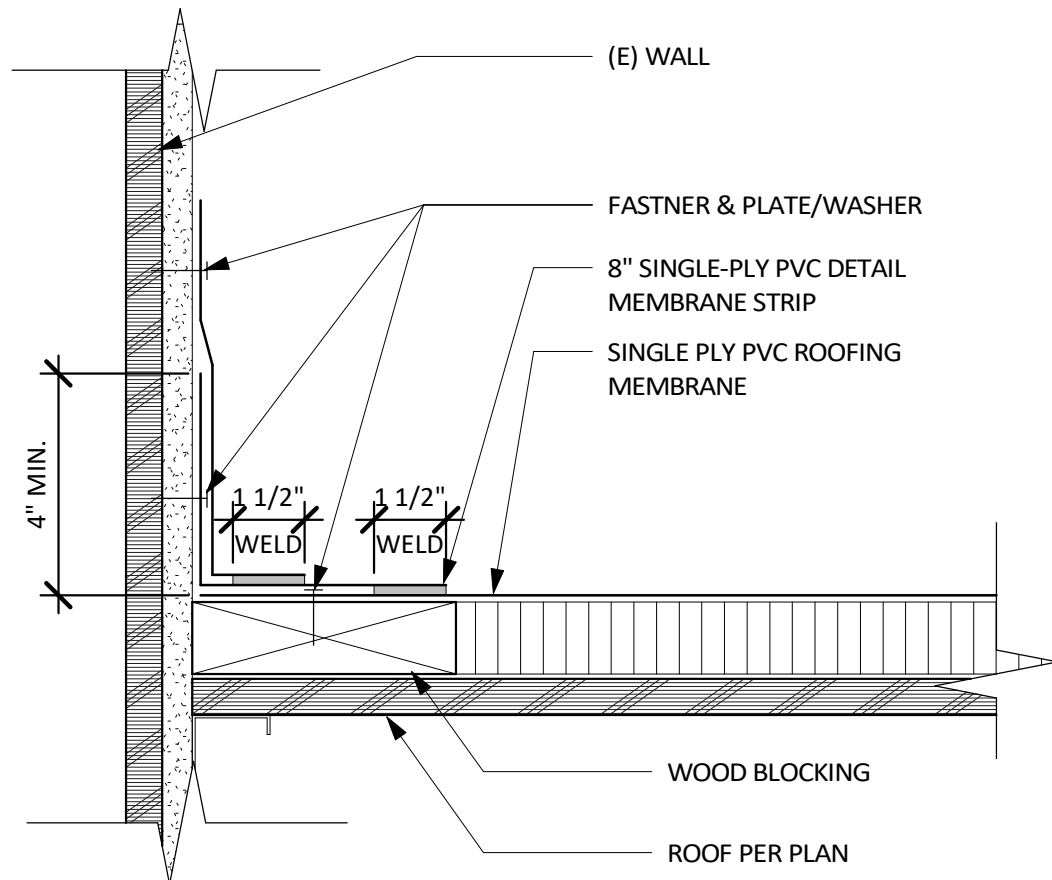


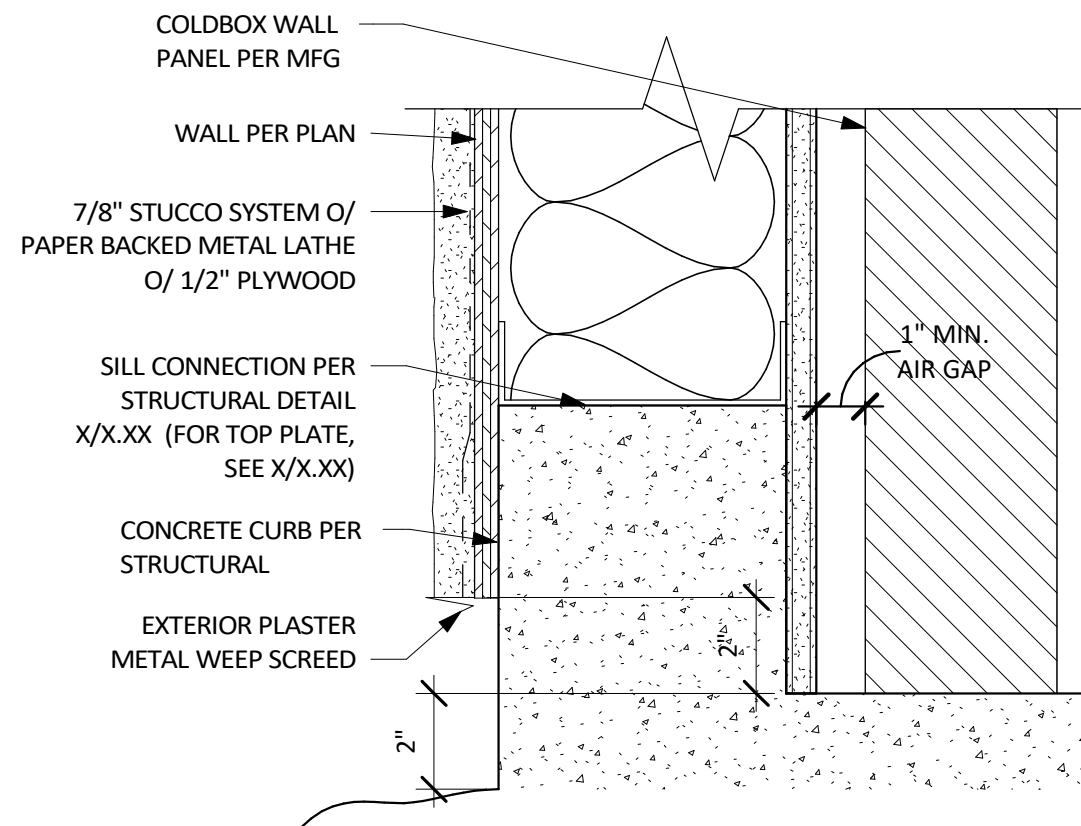
WALL SCHEDULE						
TYPE	DESCRIPTION	STRUCTURAL MATERIAL	EXTERIOR FINISH	INTERIOR FINISH	FIRE RATING	INSULATION
1A	EXTERIOR, 1 HR, GYP O/METAL STUD	2x4 METAL STUD - 400S162-54	3 COAT 7/8" STUCCO SYSTEM O/ PAPER BACKED METAL LATHE O/ 1/2" PLYWOOD	N/A	1 HR	R-13
2A	INTERIOR COLD BOX PANEL	PER MFG.	PER MFG.	PER MFG.	PER MFG.	PER MFG.



WALL TYPE 1A



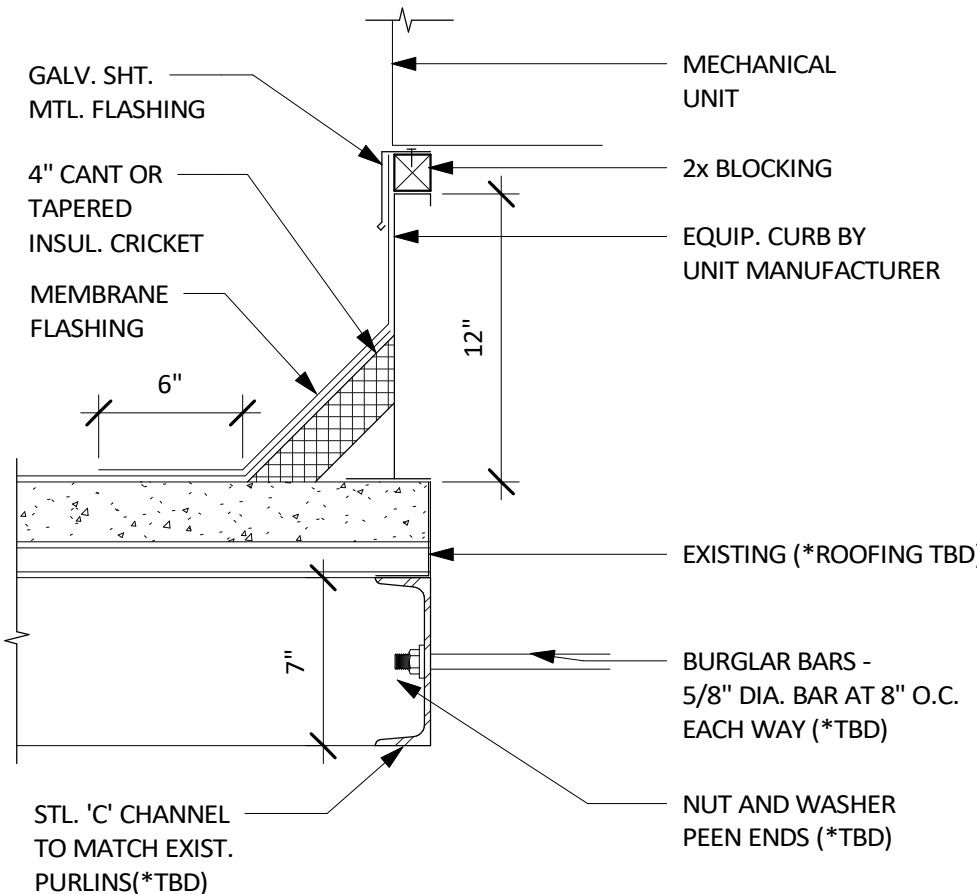
4 FLASHING @ BLDG ROOF CONNECTION



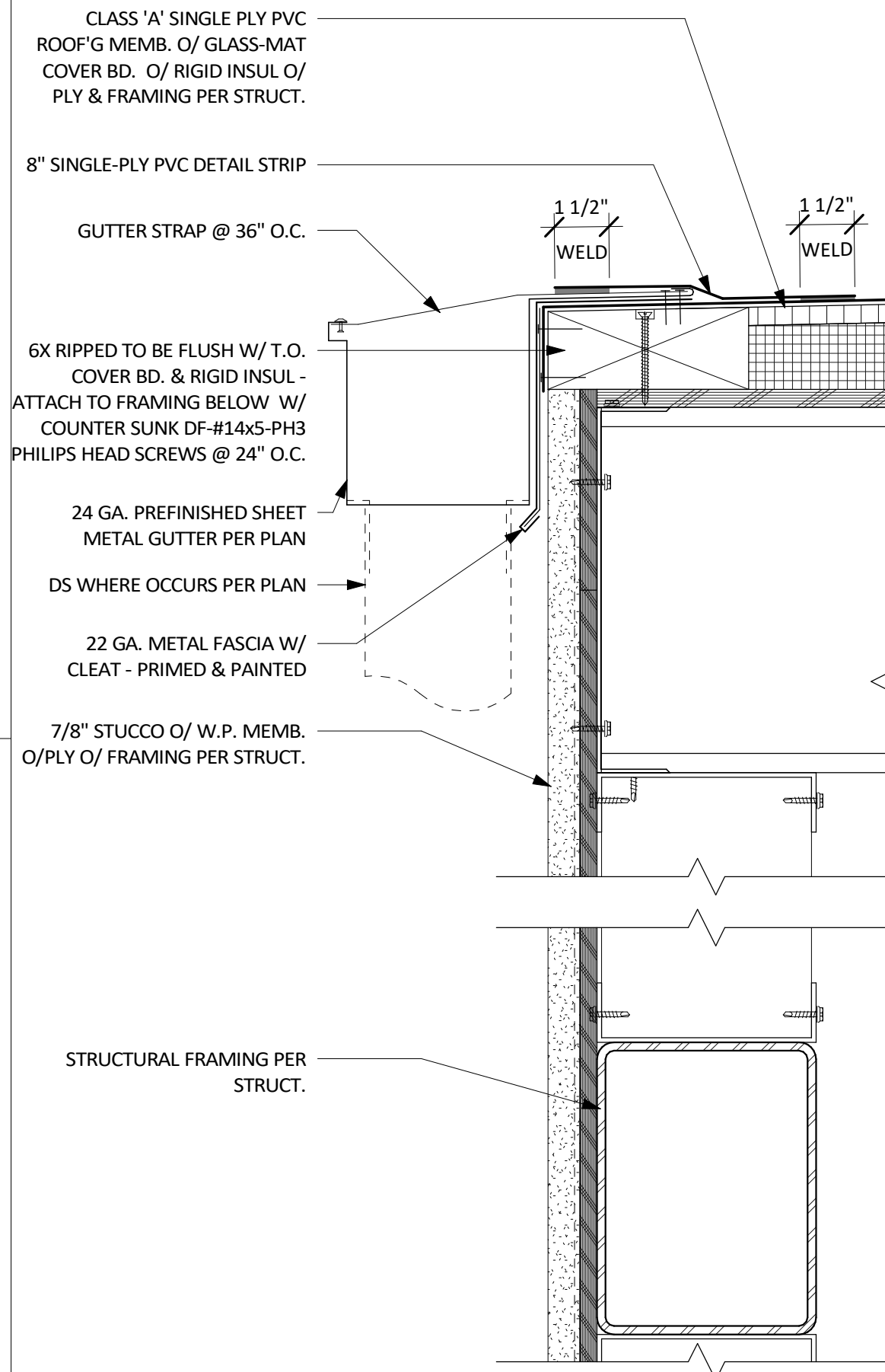
1 TYP. STUCCO WALL AT CURB
3" = 1'-0"

DOOR SCHEDULE													
NO.	TYPE	OPERATION	LOCATION	OPENING		DOOR			FRAME			FIRE RATING	COMMENTS
				WIDTH	HEIGHT	MTRL	EXT FINISH	INT FINISH	MTRL	EXT FINISH	INT FINISH		
101	A	SWING	VESTIBULE	3'-4"	7'-0"	HM	PT*	PT*	HM	PT*	PT*	-	EXISTING, SALVAGE AND RE-INSTALL.
102	B	SWING	FREEZER	PER MFG.	PER MFG.	PER MFG.	PER MFG.	PER MFG.	PER MFG.	PER MFG.	PER MFG.	PER MFG.	PER MFG.
103	B	SWING	COOLER	PER MFG.	PER MFG.	PER MFG.	PER MFG.	PER MFG.	PER MFG.	PER MFG.	PER MFG.	PER MFG.	PER MFG.
*PAINT TO MATCH EXISTING													

*PAINT TO MATCH EXISTING



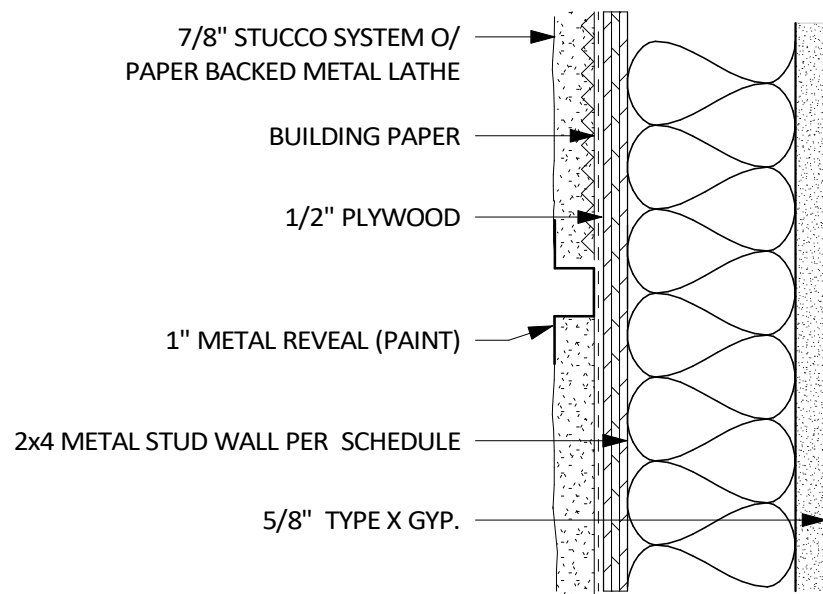
5 MECHANICAL CURB
1 1/2" = 1'-0"



3 ROOF EDGE AND GUTTER ATTACHMENT

FINISH SCHEDULE							
LOCATION	FLOOR	WALLS				WALL BASE	CEILING FINISH
	FINISH	NORTH	EAST	SOUTH	WEST		
VESTIBULE	EPOXY	N/A	PT*	N/A	PT*	INTEGRAL EPOXY	PER MTG

*PAINT TO MATCH EXISTING



6 STUCCO REVEAL

FINISH LEGEND	
PT	PAINT
EPOXY	EPOXY
GS	GALVANIZED STEEL

MATERIALS LEGEND	
HM	HOLLOW METAL

FINISH LEGEND

MATERIALS LEGEND

WALL SCHEDULE NOTES

1. INSULATION MATERIAL SHALL MEET REQUIREMENTS SET FORTH IN CALIFORNIA ENERGY CODE SECTION 110.8
2. METAL STUDS: CLARK DIETRICH METAL STUDS & TRACK, ICC ES 1166P
3. AT CEILING PROVIDE SOUND BATT INSULATION BETWEEN JOISTS
4. AT WET LOCATIONS PROVIDE MOISTURE RESISTENT GYPSUM BOARD

DOOR & WINDOW NOTES

1. VERIFY REQUIRED FRAME THICKNESS FOR ALL WALL TYPES
2. ALL ITEMS REFERENCED ARE NEW UNDO.
3. EXTERIOR DOOR & WINDOW GLAZING SHALL BE DUAL GLAZED, LOW-E, WITH A MIN. OF ONE TEMPERED PANE.
4. EXTERIOR WINDOWS, EXTERIOR GLAZED DOORS, GLAZED OPENINGS WITHIN EXTERIOR DOORS, AND GLAZED OPENINGS WITHIN EXTERIOR GARAGE DOORS MUST COMPLY WITH ONE OF THE FOLLOWING:
 - A. MULTI-PANED GLASS WITH A MINIMUM ONE TEMPERED PANEL (GLAZING FRAMES MADE OF VINYL MATERIALS SHALL HAVE WELDED CORNERS, METAL ANCHORAGE IN INTERLOCK AREAS, AND BE CERTIFIED TO ANSI/AAMA/NW10A 101.15.2-97 STRUCTURAL REQUIREMENTS, OR
 - B. HAVE A FIRE-RESISTANCE RATING OF NOT LESS THAN 20 MINUTES WHEN TESTED ACCORDING TO NFPA 25?
5. AT ALL SLEEPING ROOMS, PROVIDE AT LEAST ONE EMERGENCY EGRESS WINDOW OR DOOR COMPLYING WITH THE FOLLOWING REQUIREMENTS:
 - A. MIN. 5.7 S.F. CLEAR OPEN AREA, EXCEPTION: MIN. 5 S.F. CLEAR OPENING ALLOWED AT GRADE LEVEL ROOMS
 - B. MIN. 24 INCH CLEAR OPENING HEIGHT X MIN. 20 INCH CLEAR OPENING WIDTH
 - C. MAX. 44 INCH SILL HEIGHT ABOVE FLOOR ON EXTERIOR SIDE